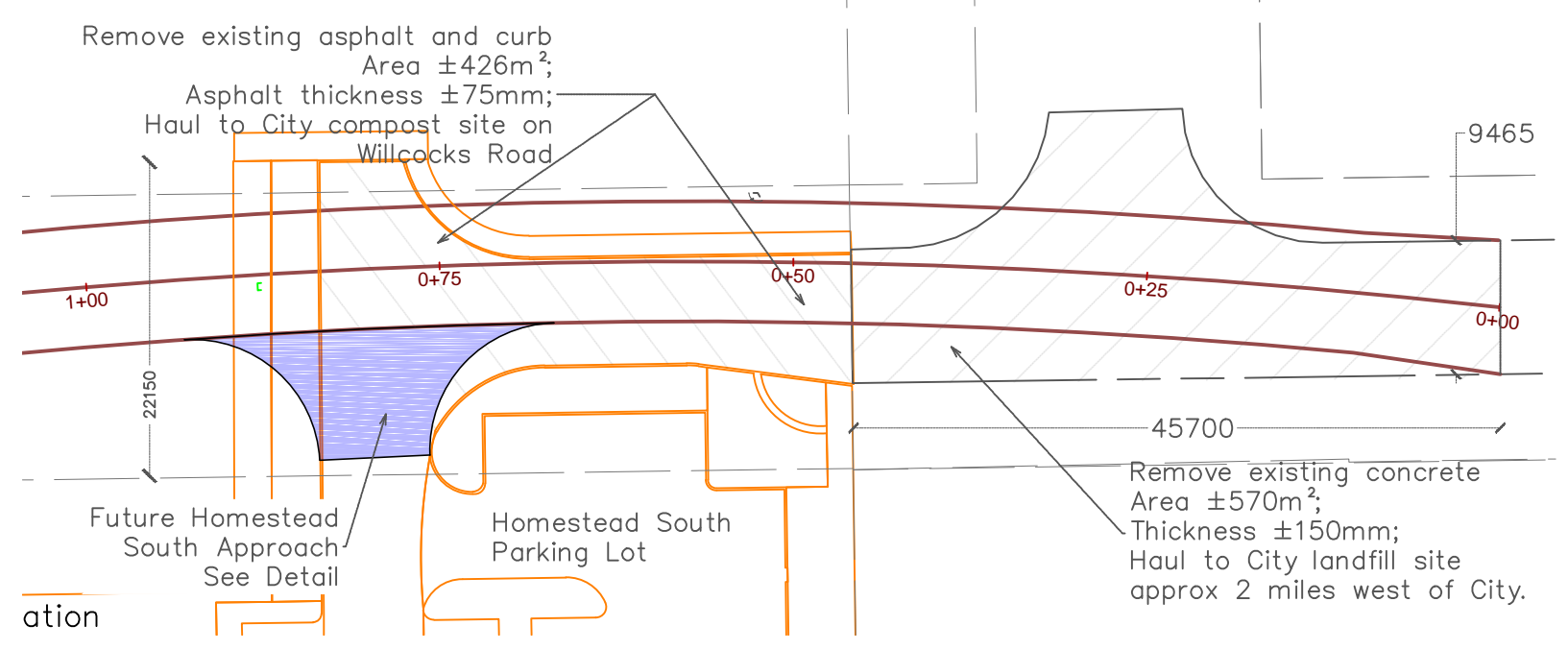
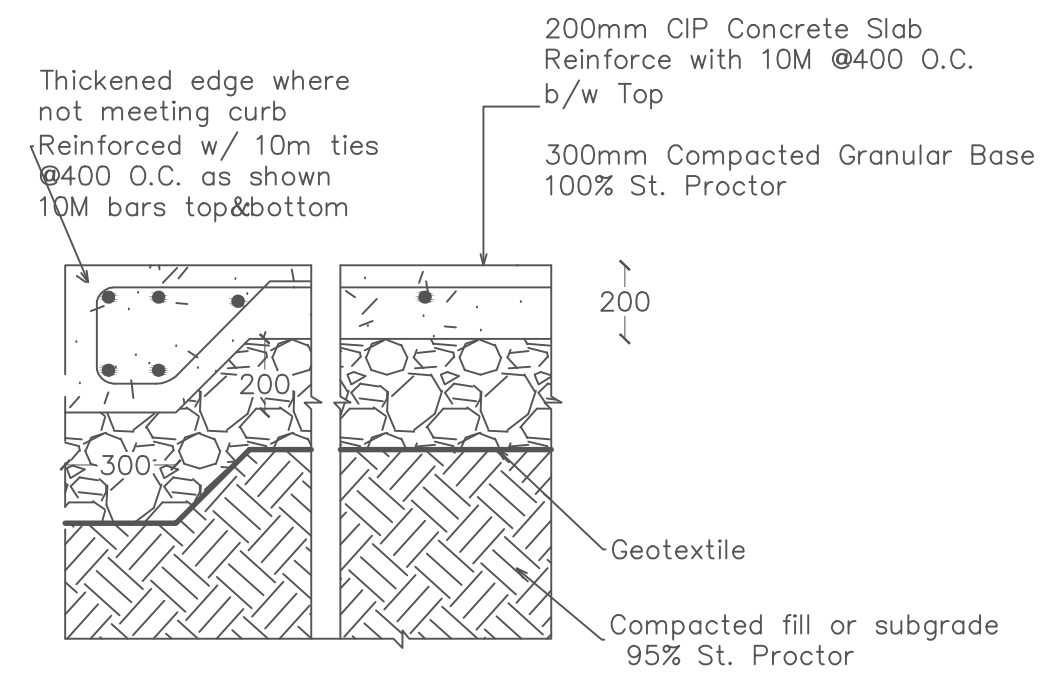
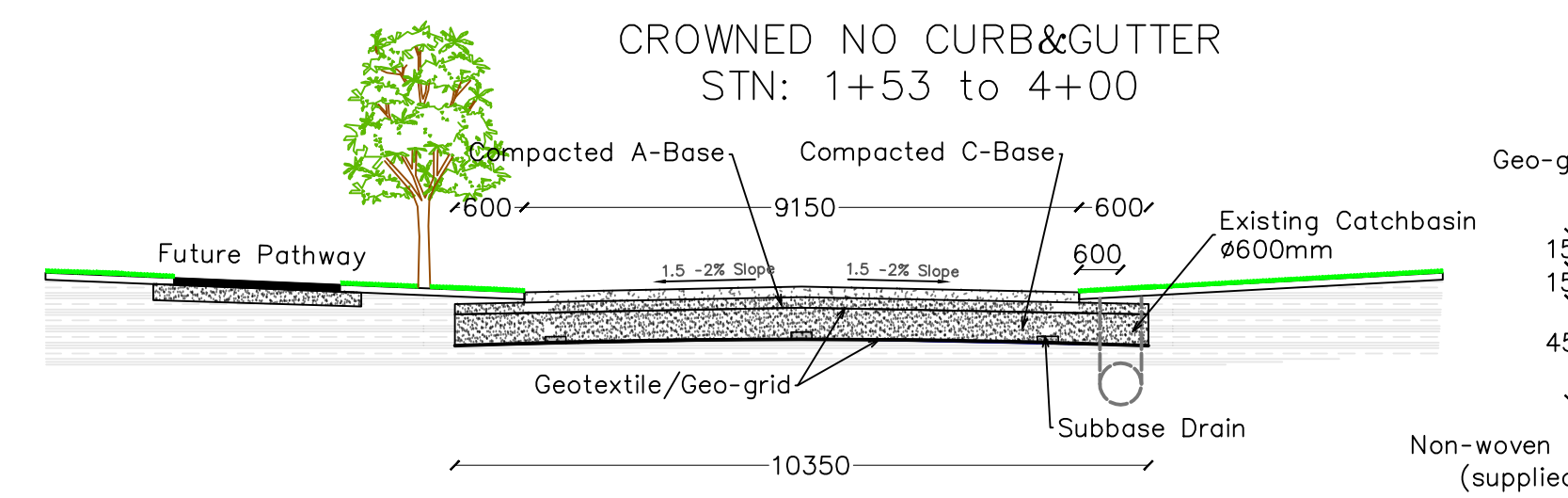
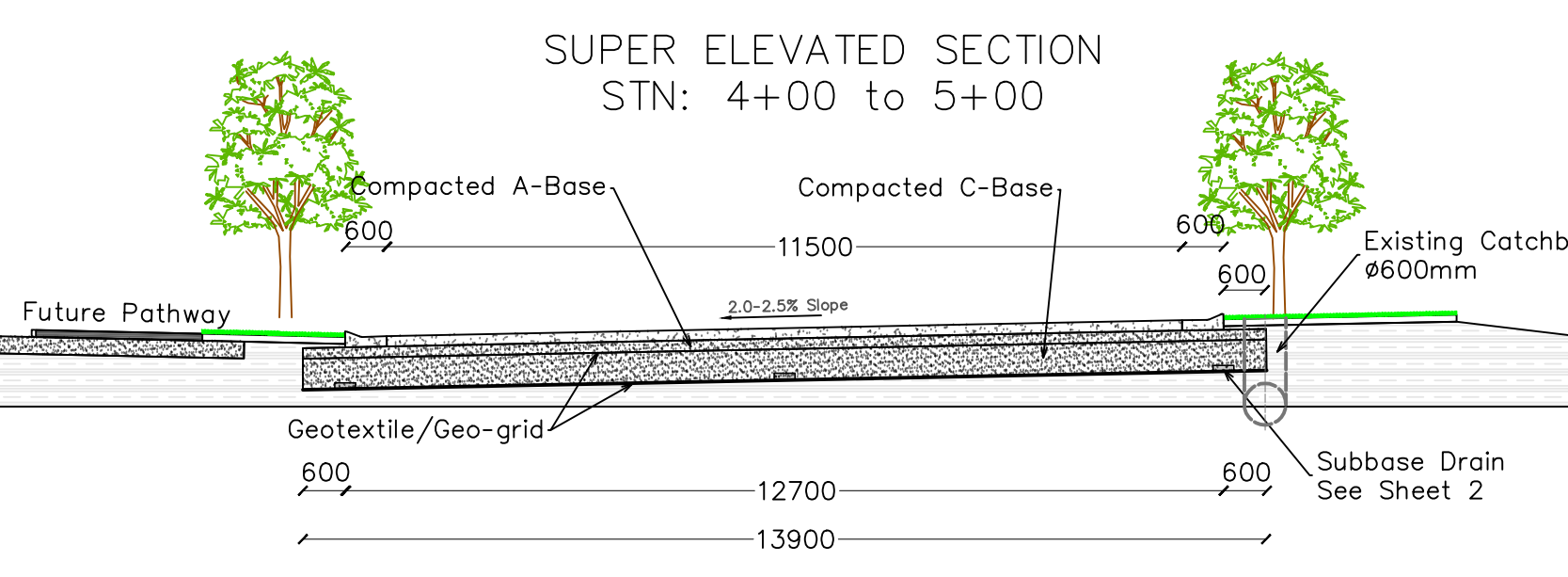
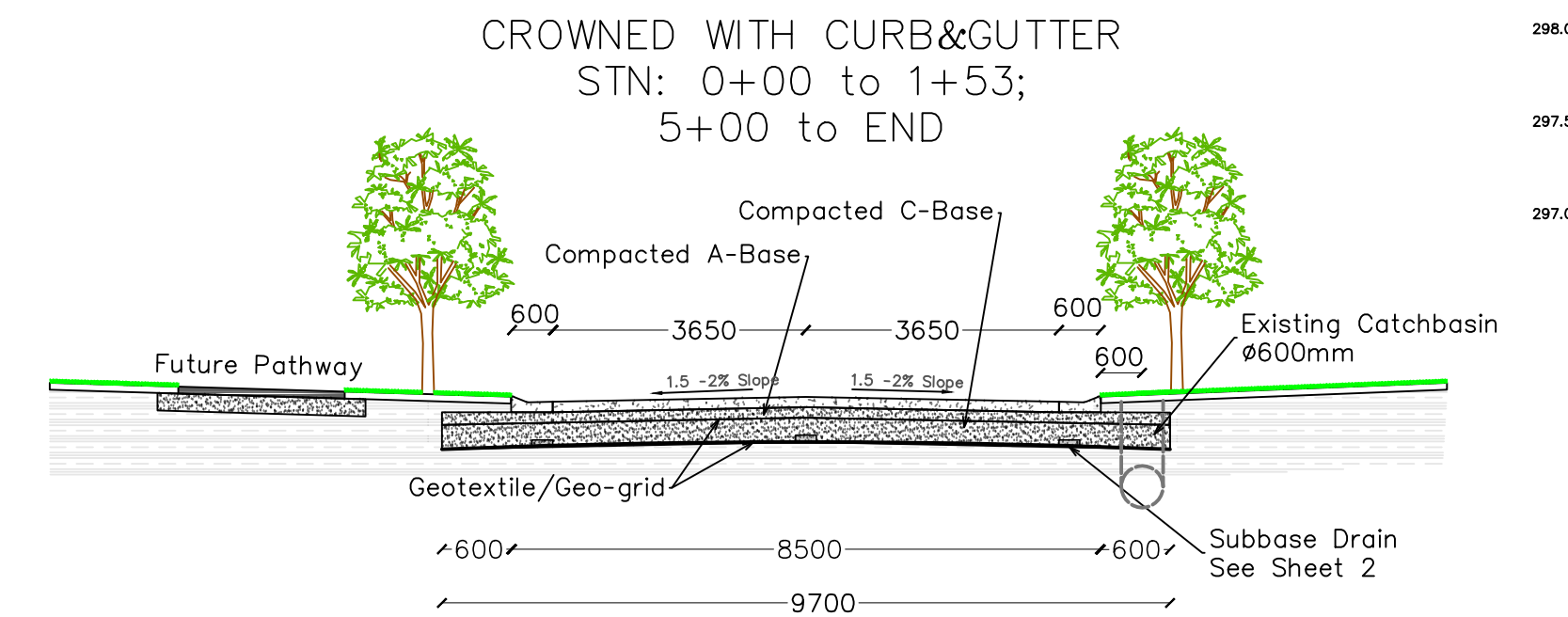


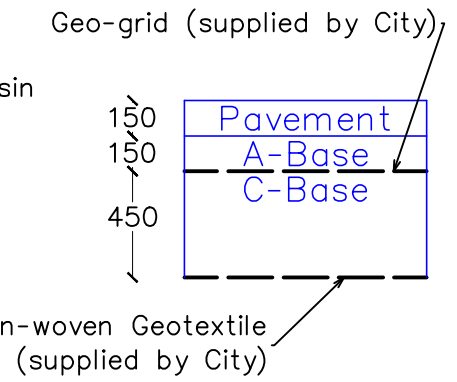
APPROACH DETAIL
SCALE: 1:20

STN: 0+00 to 1+00 DETAIL
SCALE: NTS



Notes:
1. Before hauling concrete and asphalt, contact Public Works at 204-822-5119.

- Notes:
1. Compact A- & C-base gravels in maximum lifts of 200mm;
 2. Nilox TXS Triaxial Geo-grid and geotextile require overlaps of 500mm, and both install by rolling onto the surface of the sub-grade/sub-base. See geo-grid installation guide for reference.



Rev.	Date	Description
Rev. B	2014.09.16	Issued For Tender
Rev. A	2014.07.09	Design For Review
Designed:	DWG 2014.07.09	
Drawn:	DWH 2014.07.09	
Checked:		
Approved:		

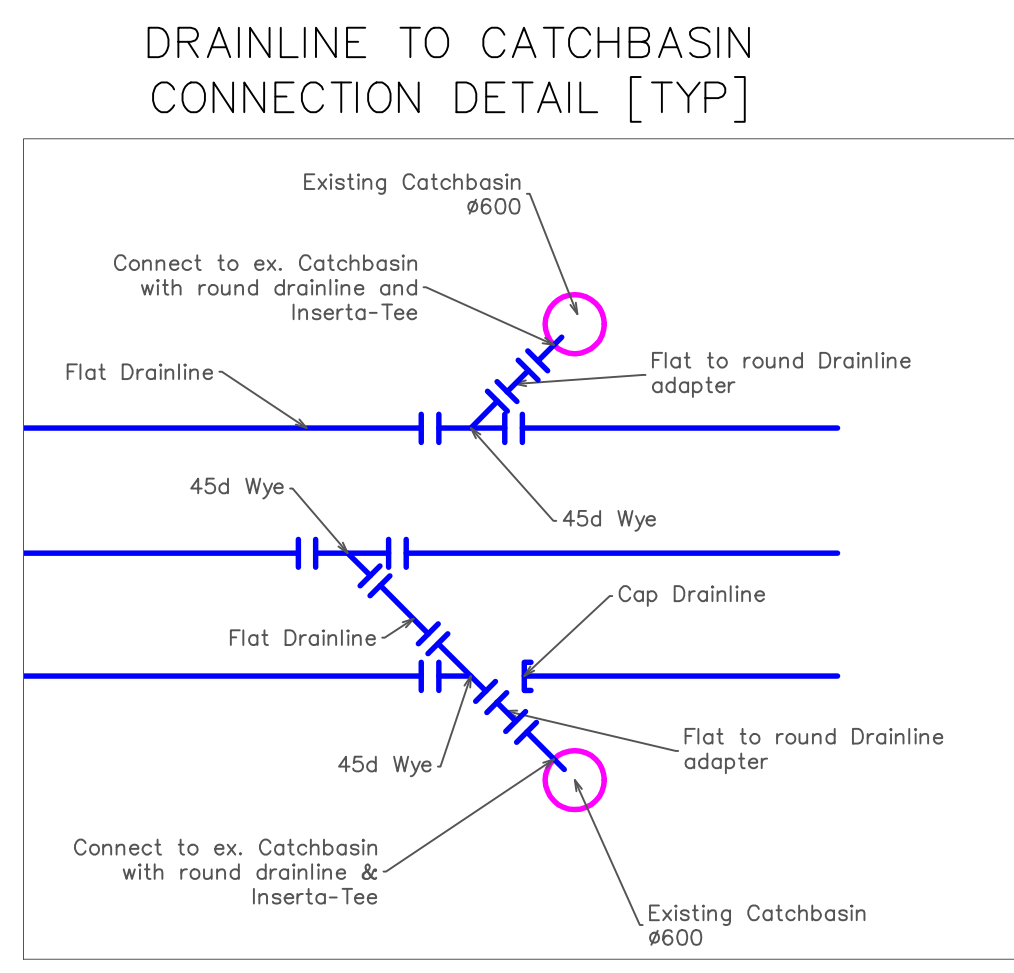
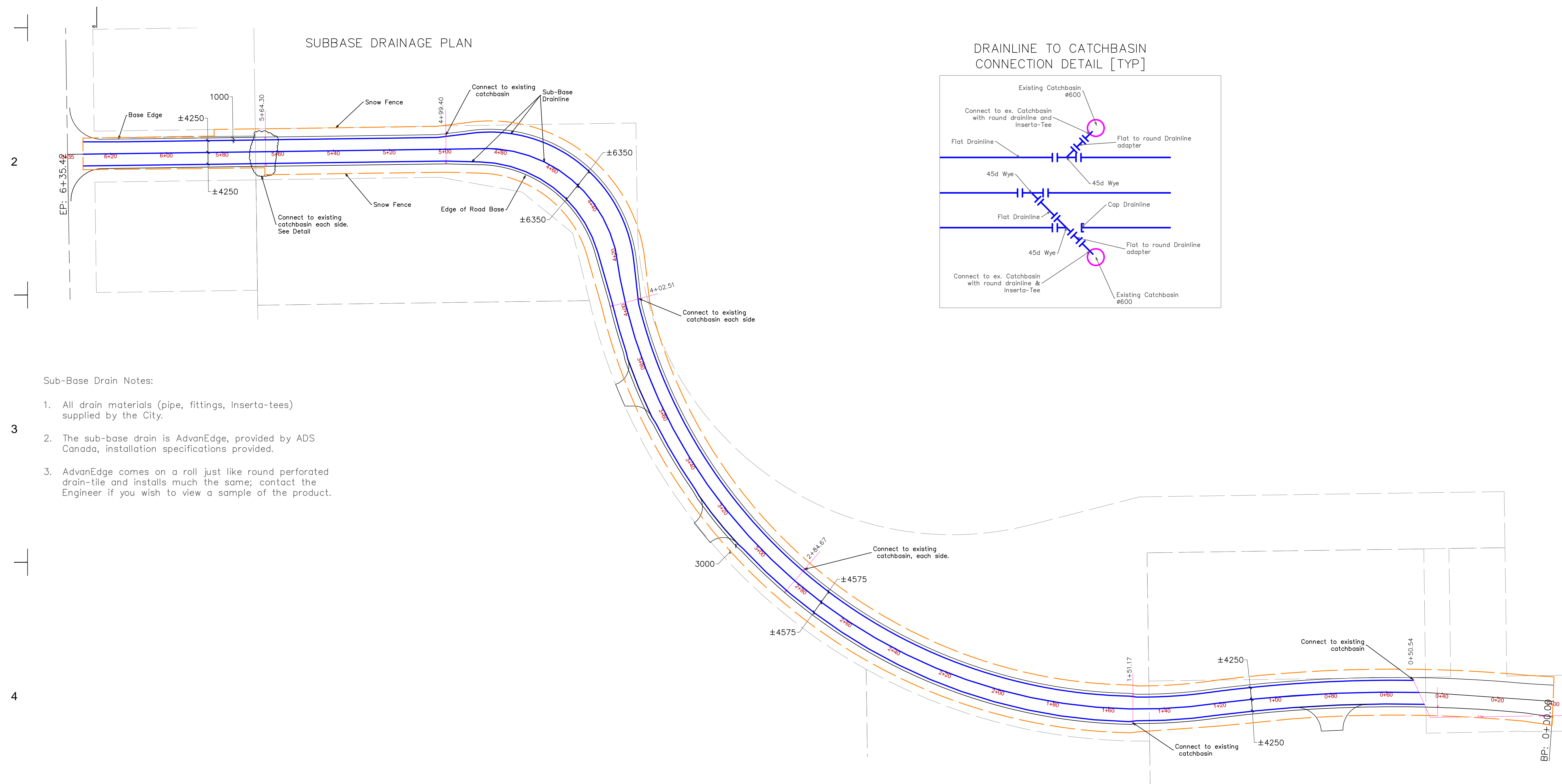
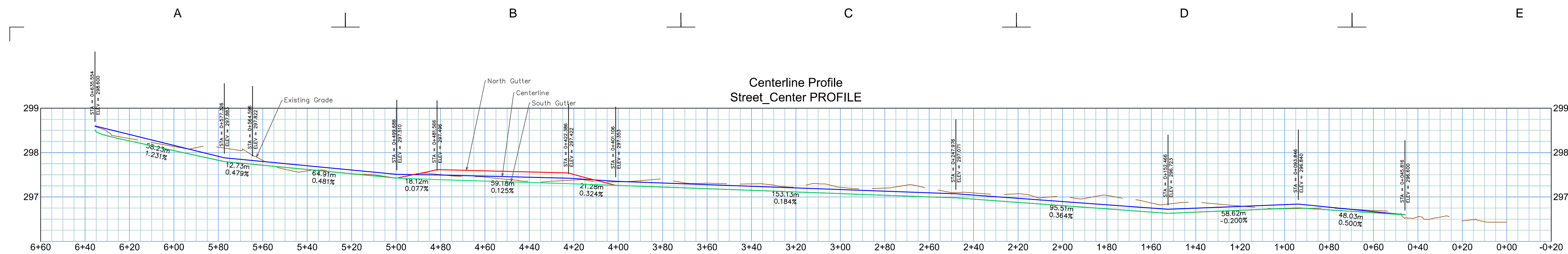
Drawing Scale
1:750

Project Code
1202

Sheet Reference

1

R-B



- Sub-Base Drain Notes:
- All drain materials (pipe, fittings, Inserta-tees) supplied by the City.
 - The sub-base drain is AdvanEdge, provided by ADS Canada, installation specifications provided.
 - AdvanEdge comes on a roll just like round perforated drain-tile and installs much the same; contact the Engineer if you wish to view a sample of the product.